

# **I m p a c t**

**A f t e r U N P S A**

**: K o r e a C a s e s**

**Bangmoo Lee**

**ROK Mission to the UN**





# Songpa Solar Nanum Power Plant

- 2015 UNPSA
- Improving the Delivery of Public Services
- Related SDGs: 7, 12
- Problem: Vulnerable households with lack access to affordable energy, lack budget
- Solution: City+NGO, Build Solar Power Plant
  - Operate Plant & Sell Electricity
  - Profit goes to the Climate Change Fund
  - Support the vulnerable people by energy bill pay, energy-saving facilities



# Progress



## Five Solar Power Plants

#	1	2	3	4	5
Period	2009~23	2010~29	2012~32	2013~33	2020~40
Capacity	200kW	921.6kW	99.36kW	98.8kW	63kW
Electricity Generation(Y)	300MWh	1,200MWh	108.8MWh	108.2MWh	87MWh
CO <sub>2</sub> Reduction (Y)	127.2t	508.8t	46.1t	45.9t	40t

## Performance (2009~20)

- Electricity Generation: 19,626 MWh
- Revenue: 8.9 mil USD
- Climate Change Fund: 1.6 mil USD
- CO<sub>2</sub> Reduction: 8,476t

## Social Projects (2009~20)

- 5,389 vulnerable families supported
- 148 welfare centers changed with energy-saving sol.
- 11 renewable energy facilities established at Mongolian and Vietnamese schools

# Impact



## Benchmark New Model

- **Environment + Social Safety**  
“Kill two birds with one stone”
- Adopted by Suwon, Pyeongtaek, Seoungbuk, Dobong City, and Seoul Metropolitan City
- Private Companies (e.g., Samsung) join the model as CSR
- Guangzhou China, Netherlands

## Service Innovation

- **Cool Roof Coating**
  - Saving energy from reduced air conditioning need in summer
- **Demand Response (DR)** in Electricity trading market
  - reducing electricity usage during peak periods in response to time-based rates or financial incentives

## Respond Climate Change

- First city in Seoul to launch Green New Deal Net-Zero City Plan
  - 2021-30, 50% (BAU) CO<sub>2</sub> Emission Reduction Roadmap
  - 10 strategies, 40 projects
- Nanum Power Plant: 9,352tCO<sub>2</sub>eq





# Public Sanitary Pads Support Policy

- 2019 UNPSA
- Promoting Gender-responsive Public Services to Achieve the SDGs
- Related SDGs: 3, 5, 6, 10, 11
- Problem: Women & girls of low-income families do not have access to affordable sanitary pads.
- Solution: ① Provide sanitary pads directly to the vulnerable W & G, ② Make sanitary pads available at all public facilities, ③ Improve reproductive health by providing accurate info

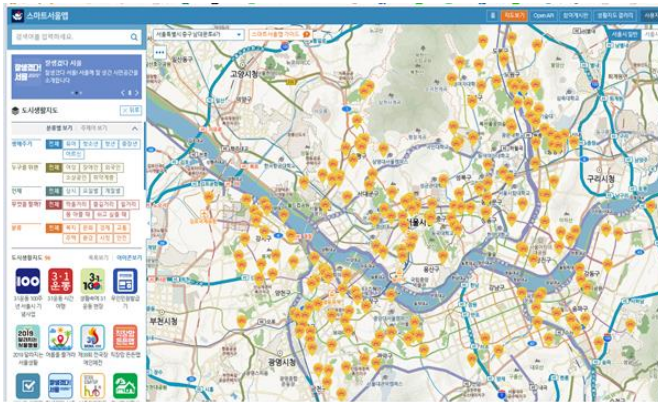


# Progress



## Sanitary Pads at Public Places

- 206 facilities (2019)  
→ 266 facilities (2020)
- Smart Seoul Map  
- find the places through app



## Support Vulnerable Women

- 1,007 women (2020)  
→ 1,895 women (2021)
- Private Company Donation  
- 277,796 (2020), 589,960 (2021)

## Campaign & Education

- ‘The Menstrual Hygiene Day’ campaign (2019-21)
- Menstruation & Talk  
- 60 times, SNS, online education



# Impact



## National Adoption

- Sanitary Pads Voucher Program
  - Ministry of Gender Equality & Family
  - 11~24 years old, low-income W & G
  - 120 USD, Card Voucher
  - Budget: 12.3 mil USD
- Local Governments
  - Busan, Gwangju, Seongnam, Deajeon, and other cities

## Private Participation

- 81 Private Organizations have joined the public sanitary pads program
- 63,000 free sanitary pads are accessible at the org.

## Improve Public Perception

- Providing accurate information & Sharing menstruation experience
- Growing awareness as universal health right for W & G
  - Children & Youth Human Rights Law (Seoul City, 2019.12)
  - Youth Welfare Support Act(2021.3)

월경공감 캠페인

### 나에게 월경은 O.O이다!

#월경공감캠페인 #경험공유하고 #월경용품받아요

10월에는 초경의 날 (10/20)과 완경의 날(10/18)이 있습니다.  
우리는 왜 여전히 월경에 대해 말하기 어려울까요?  
어쩌면, 말할 수 있는 시작점이 없던 건 아닐까요?

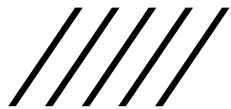
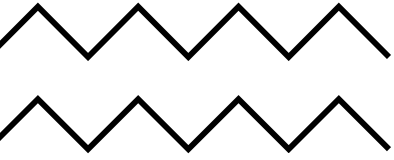
월경의 시작과 끝을 기념하는 10월  
여러분의 월경 경험을 나눠주세요!  
100분을 추천하여 다양한 월경용품을 드립니다.

<b>캠페인 안내사항</b>	<b>중점품</b>
<b>캠페인 기간</b> -10월 20일(일) ~ 11월 16일(토) (28일간)	
<b>참가 대상</b> -여성 건강과 월경에 관심있는 누구나	다양한 월경용품 경험용품을 위한 월경패드, 월경컵, 안티리드 등 만능월경용품
<b>참여 방법</b> -경험 공유하러 가기 버튼 클릭 후 참여	<b>경험 공유 예시</b>
<b>결과 발표</b> -11월 20일(수) 개별연락	"나에게 월경은 번거로운 친구" 역상 월경용 시작하면 후과 마법이 적용되면, 월경월 안 하면 내 컨디션 좋지 않은 건지 이번 달은 왜 하지 않는 건지 걱정아 된다. 내 몸이 건강치 못한 월경. 그래서 나에게도 번거로운 친구다.

서울특별시 | 부산광역시 | 광주광역시 | EASE U. PORE

월경은 편안하면 불편하고 불편하면 존재. 그래서...  
기대하던 여행을 망치게 하는 날씨. 그리고...  
우울함, 행복주고 싶지만 친구가기 어려워요. 그뻐지러...

경험 공유하러 가기  
<http://www.pad4u.co.kr>



**T h a n k   y o u**

**Bangmoo Lee**

**<[bangmoolee@mofa.go.kr](mailto:bangmoolee@mofa.go.kr)>**